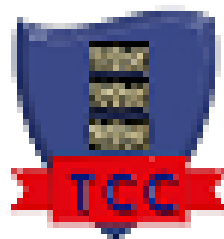


## WHAT IS THE PURPOSE OF OUTREACH PROVISION?

- To support schools to enable students to achieve their full potential through a gradual re-integration into a school setting
- To ensure the best possible outcomes for students
- To support and develop effective working partnerships with schools and strengthen commissioning arrangements

### **Effective Outreach will:**

- Be time limited
- Be personalised to each student
- Positively impact upon the personal well-being of students
  - \* Positively impact upon the achievement and attainment of students
- Promote and support the inclusion of vulnerable and disadvantaged students
- Build capacity in schools
- Work with mainstream schools to ensure successful transitions
- Continually evaluate our Outreach provision and measure impact and success



## THE TRIPLE CROWN CENTRE

*'Achieve, Believe, Succeed'*

### Outreach Support

Our Outreach Learning Mentors are all skilled in different areas. They will work together with families and referring schools to ensure that an appropriate, personalised pathway is developed for the student.

### **Outreach is not about:**

- Crisis intervention
- 1:1 home tutoring
- Securing a Special School or EHCP plan
- Long term support for students

## WHAT IS THE VISION FOR OUR OUTREACH PROVISION?

- To provide an inclusive approach for students with medical needs
- To support and increase the attendance, participation and achievement of all students referred to The Triple Crown Centre
- To develop and ensure a better understanding of the barriers to learning for students with physical and/or mental health needs
- To create bespoke Individual Learning Plans to support students to re-engage with education
  - To support and underpin the additional support services that students may be accessing in order to be inclusive
- To provide personalised interventions and support to students and their families as needed

## OUR EXPECTATIONS

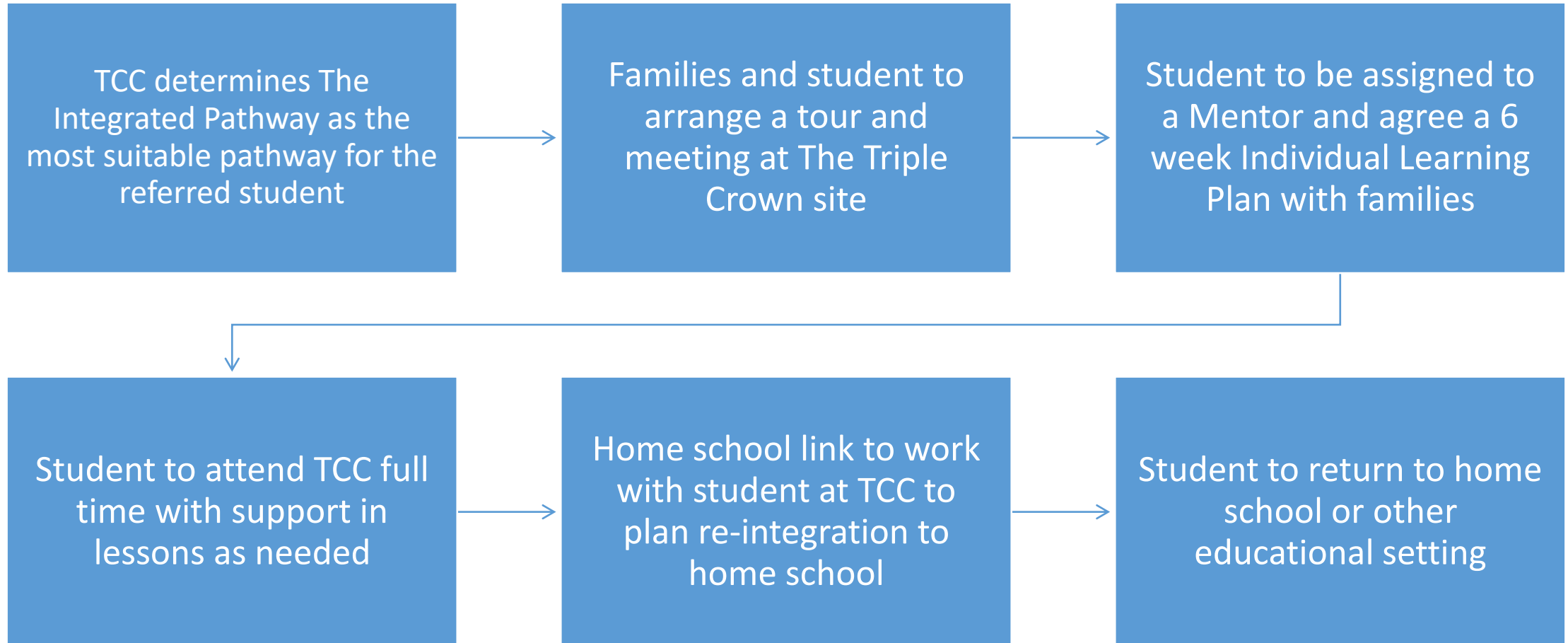
### **Outreach Learning Mentors will:**

- Have a commitment to collaborative working with schools, families and external agencies
  - Possess a good level of specialist knowledge/ expertise
- Agree expected outcomes/ success criteria and clear timescales with referring schools
- Evaluate work undertaken and maintain regular communication with referring schools

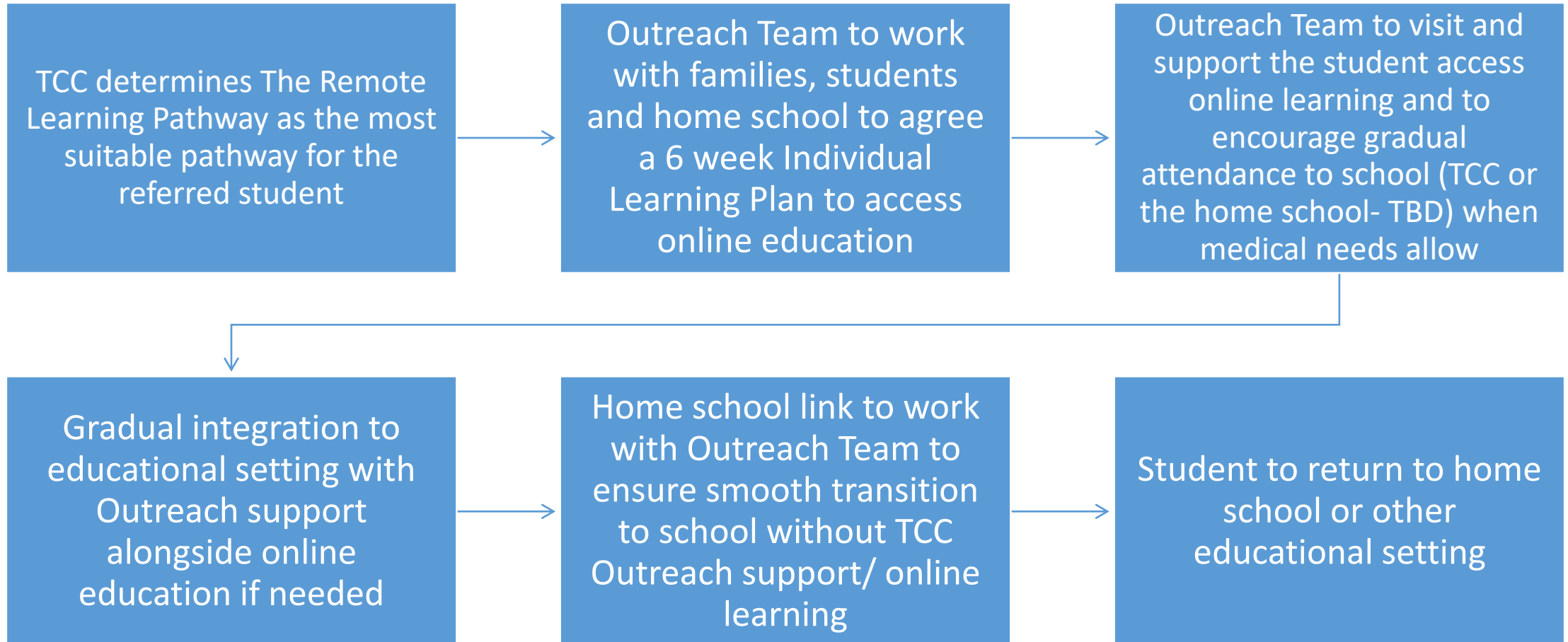
### **Referring schools will:**

- Be clear about the purpose of the referral and pathway request
  - Evaluate the work undertaken with the outreach worker
  - Commit appropriate time and personnel to the work
- Provide a key liaison person who will physically support with the student's re-integration to the main school setting and to attend review meetings

# Pathway 1- The Integrated Pathway



# Pathway 2- The Remote Learning Pathway



# Pathway 3- The Outreach and Hybrid Pathway

